

# HOW TO ASSEMBLE YOUR TROLL



## YOU WILL NEED



Scissors or craft knife



Multipurpose glue



Butter knife



Ruler



Cutting mat (optional)

## GETTING STARTED

**1** Score all the pieces: Using a ruler as a guide, run the back side of a butter knife firmly along all **dashed** and **dotted** lines.



**2** Using scissors or a craft knife and cutting mat, cut out all of the pieces along the **solid** lines.



**3** Fold all pieces along score lines, using the folding key below as a reference.

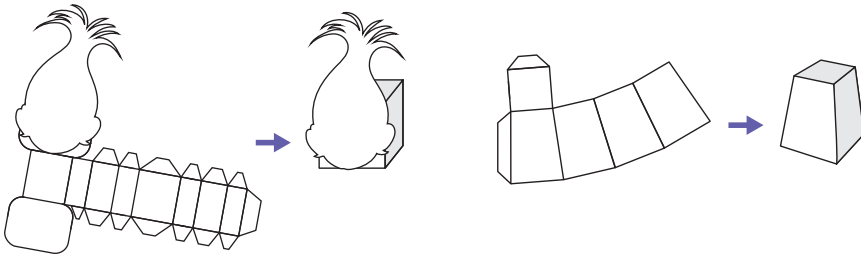


**MOUNTAIN FOLD**

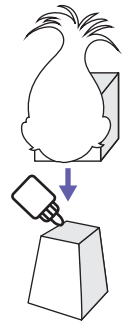
.....

## CHARACTER ASSEMBLY

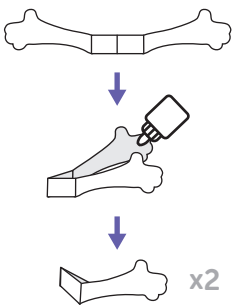
**4** Fold together the head and body of your characters while following the indicated glue marks. The head should look like a rounded box!



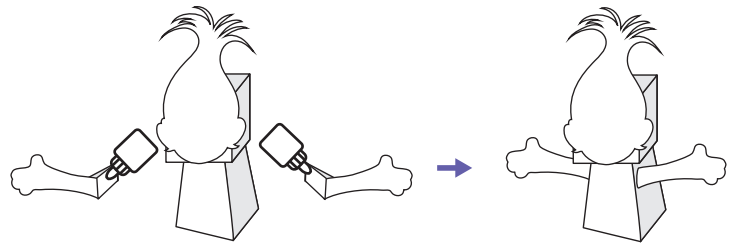
**5** Gently glue the head to the body of each character. Use your finger to prop up the body when you apply the glue.



**6** Fold arms in half and glue two sides together. Then fold at arm crease to attach to the body.

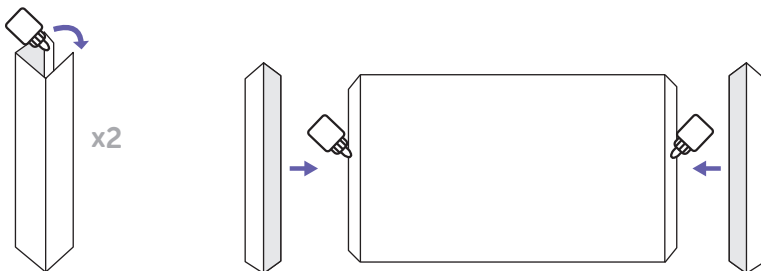


**7** Gently glue arms in place on side of body.

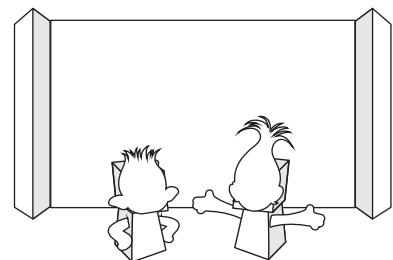


## BACKGROUND ASSEMBLY (OPTIONAL)

**8** Fold each flower together. You will end up with two triangular prisms. Match the glue icons together when gluing the prisms to the Troll Village Backdrop.



**9** You're done! Now create your other favorite Trolls and have your Village grow!

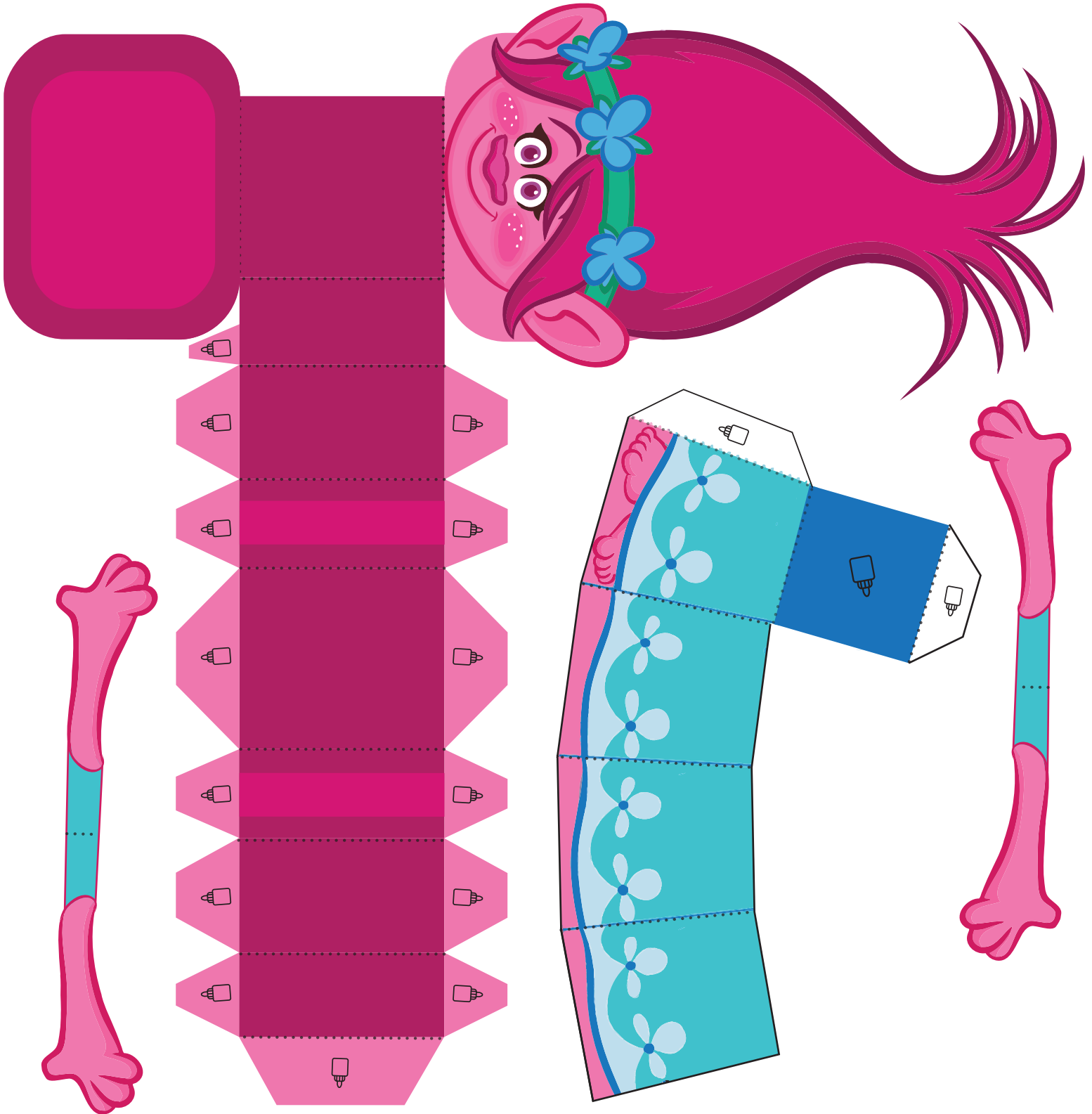




POPPY

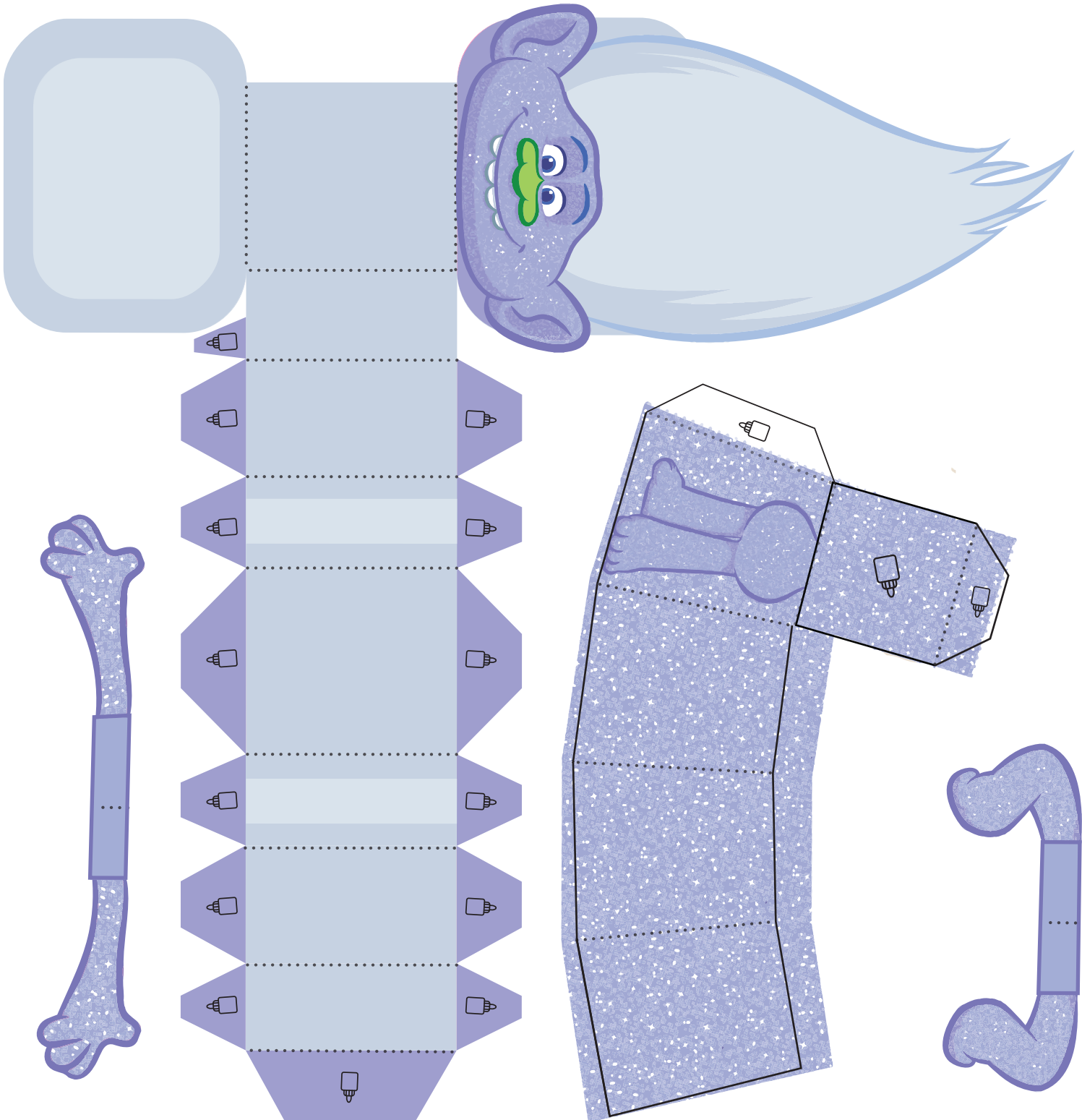
DREAMWORKS

Trolls





# GUY DIAMOND

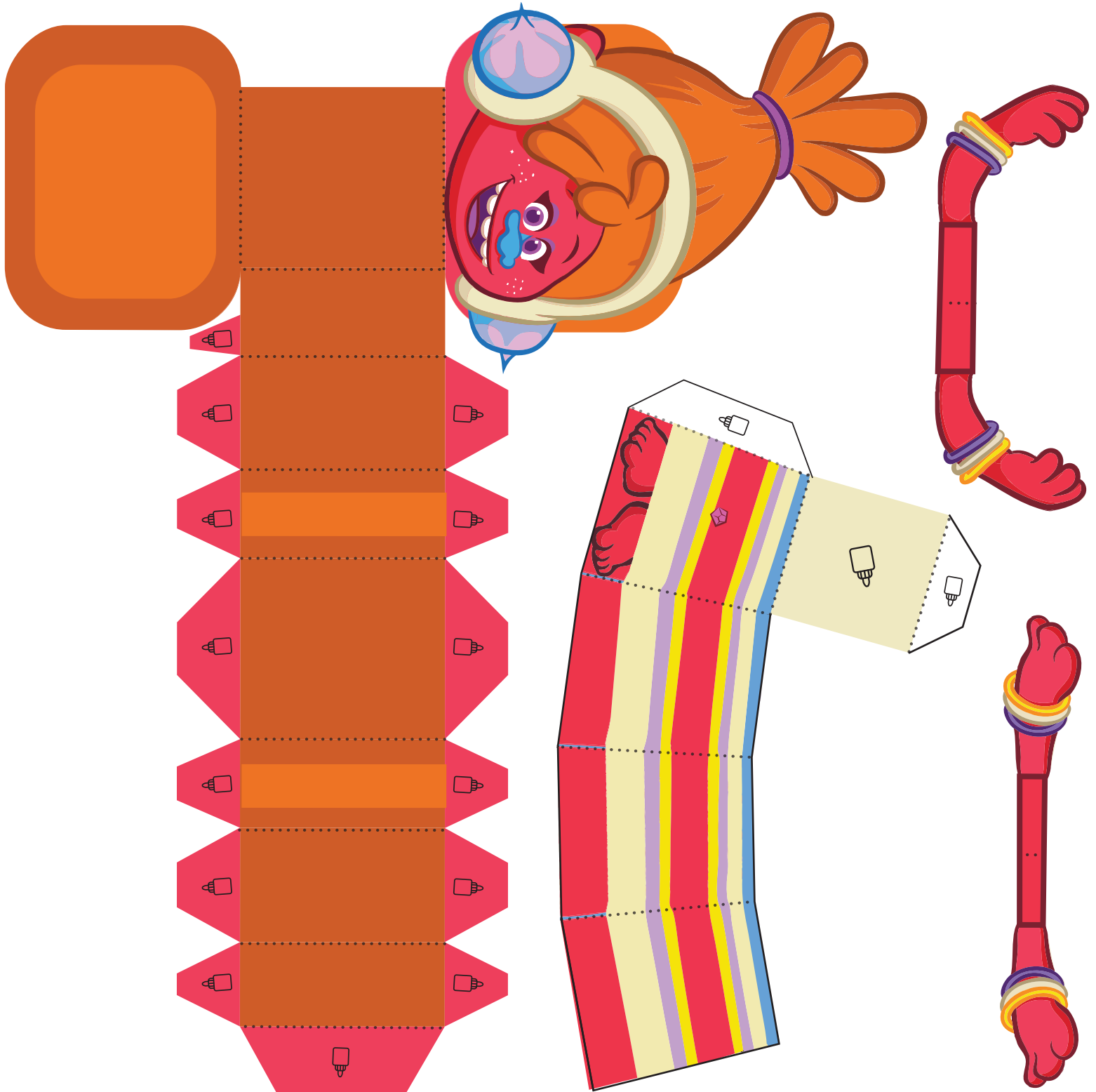




DJ SUKI

DREAMWORKS

Trolls

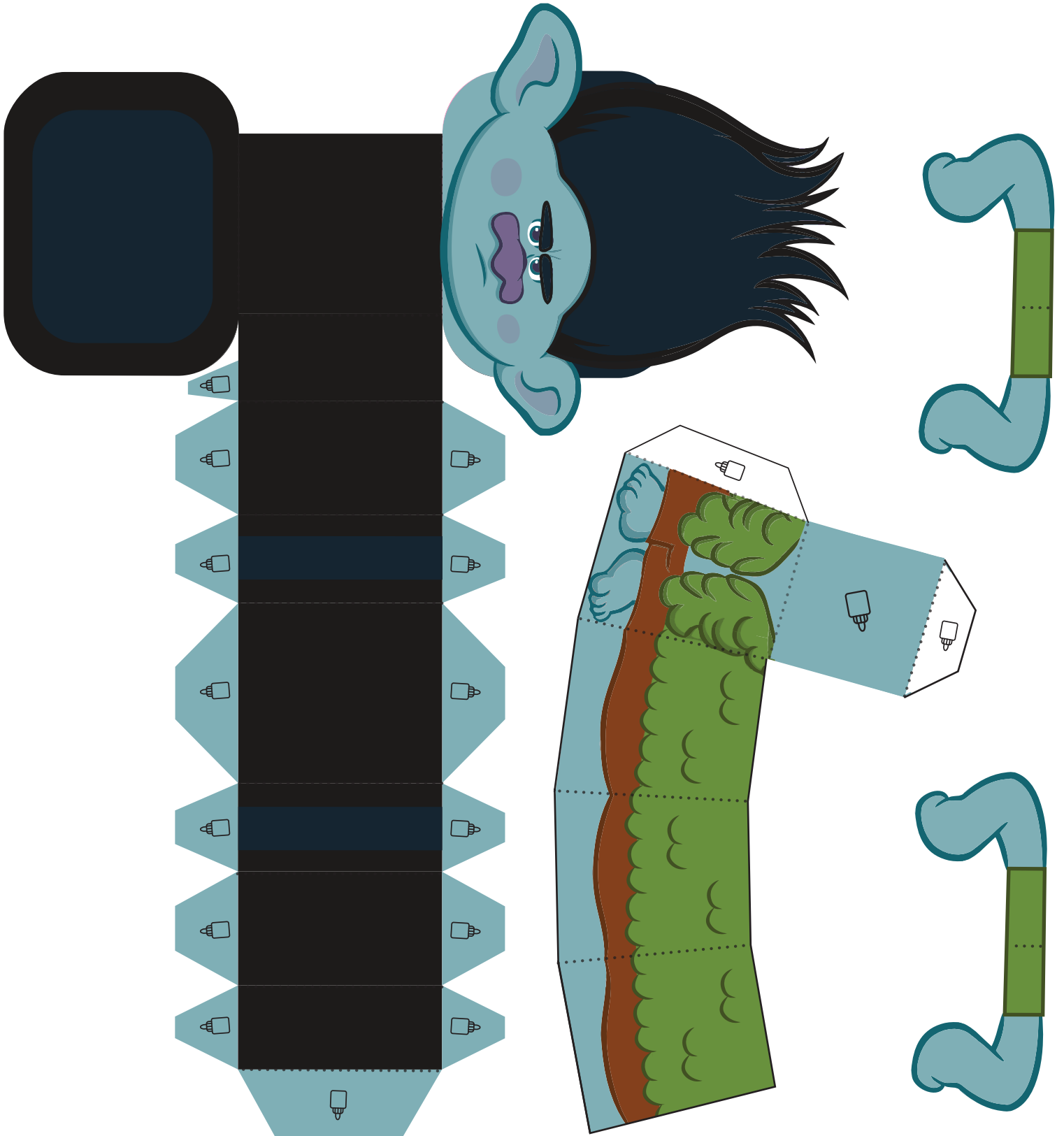






**BRANCH**

DREAMWORKS  
**Trolls**

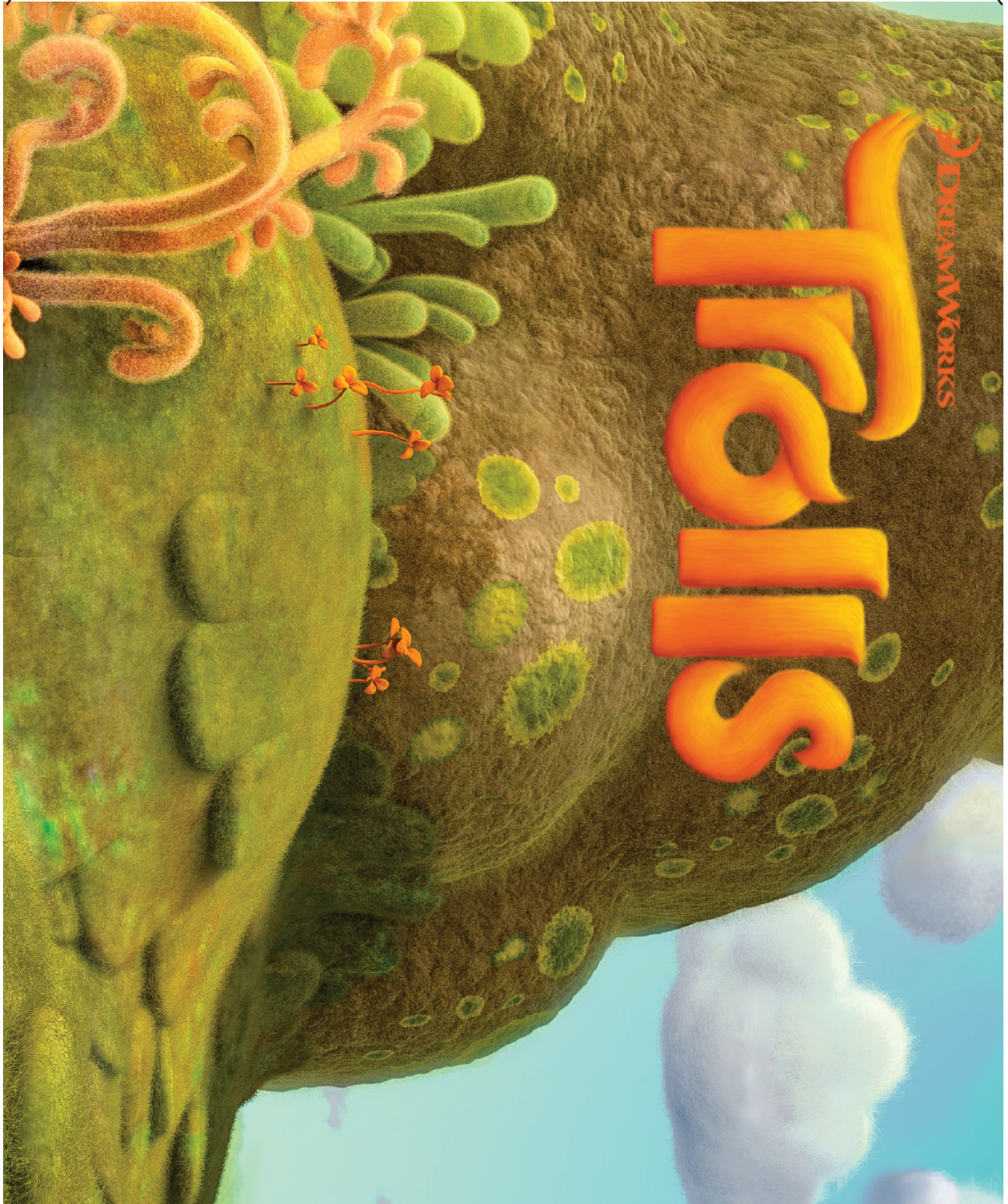




## TROLL VILLAGE

DREAMWORKS

# Trolls



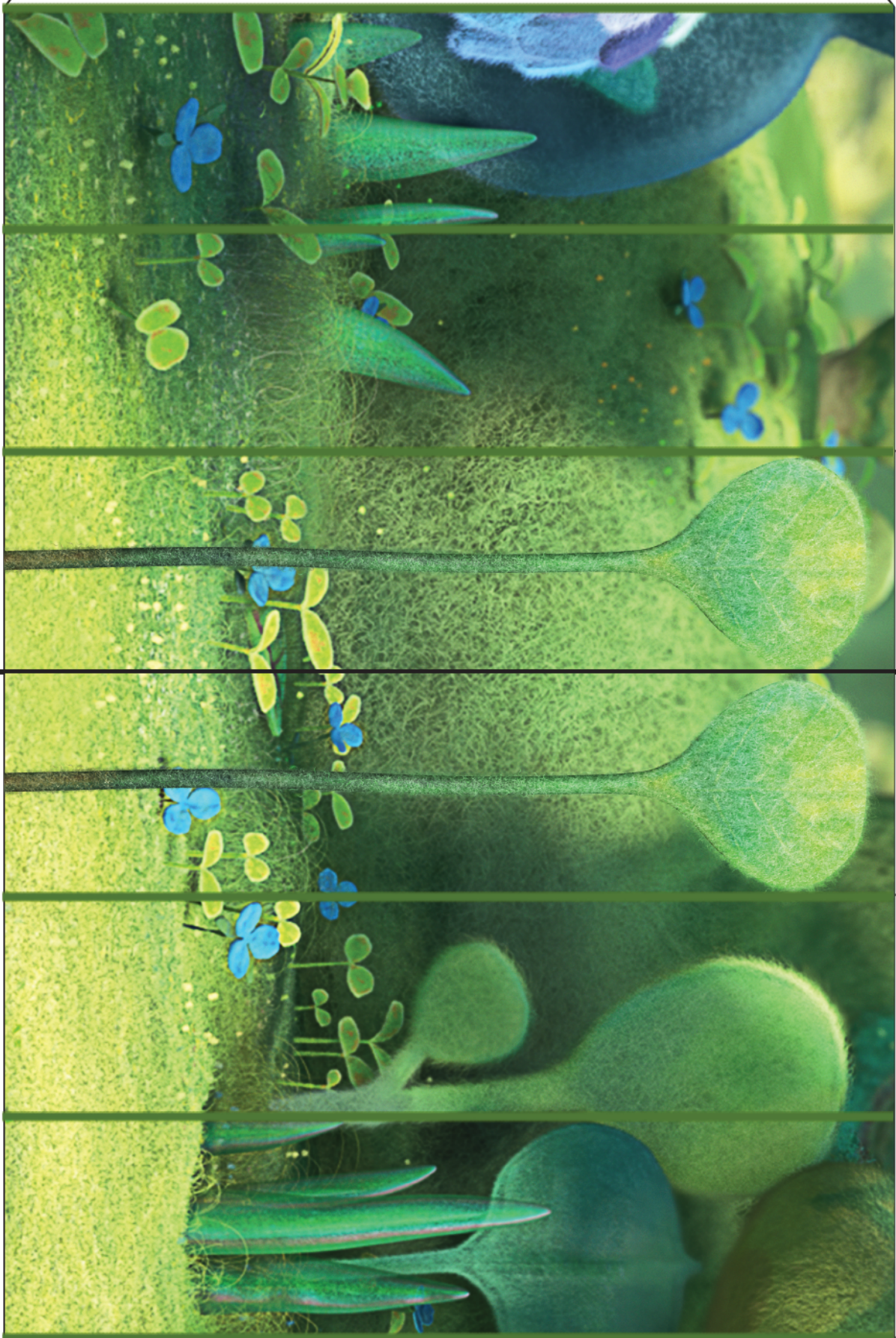




 **create**  
DREAMWORKS









## TROLL VILLAGE



**10** Using scissors or a craft knife and cutting mat, cut out all of the pieces along the **solid** lines.

Glue the flowers to the green prisms on the sides.

Then slide Cloud Guy into place at the top of your background by sliding tabs in front and behind background.

